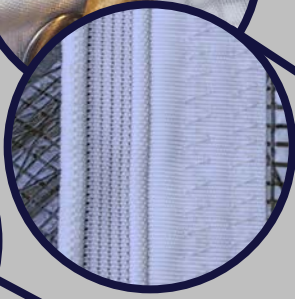


Dart Sails & Covers

Jib

Luff tape or
brass piston
hanks



Anti-chafe 3-step
stitched seams



Leech line with alloy
cleat at clew

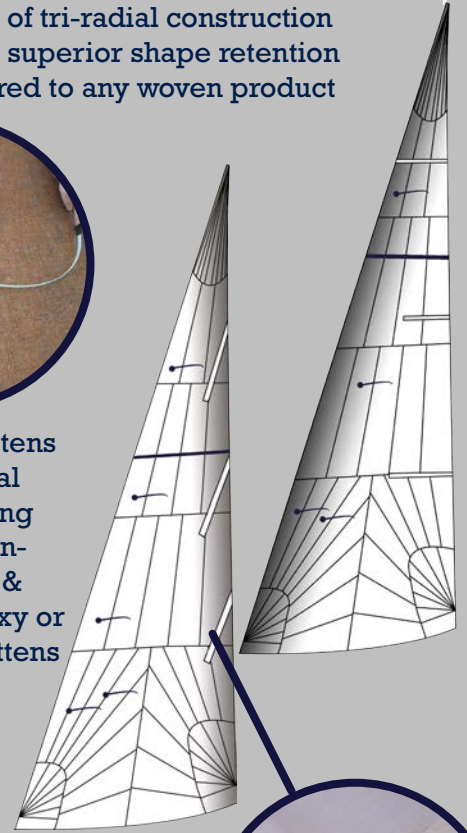


Option of lightweight UV
protective strips on leech & foot

Option of tri-radial construction
offers a superior shape retention
compared to any woven product



Option of battens
and vertical
battens, using
tapered non-
shattering &
anti-twist epoxy or
fibreglass battens



Option of
vertical battens,
with vertical
batten opening
at leech end or
normal battens



Option of multi-
attachment point clew
board for self tacking
headsails

Jibs and Staysails are often high aspect (long luff and short foot) and are usually efficient sails. For these applications where the sail is so high aspect a high yarn count along the leech is prerequisite for a well setting sail but a common problem is that the off axis stability of most high aspect fabric materials are poor; the best solution is to make the sail in a fabric or construction with not only good resistance to stretch along the leech but also in the bias otherwise the sail can 'tube' in shape in other words get excessively deep in camber under load which is bad news in strong winds. Dart Sails recommend fabrics to suit the application rather than

select available materials based on price or availability. Dart Sails design our Jibs and Staysails to geometrically fit and sheet to the boat. Self tacking Jibs or sails that do not have a variable sheeting position require clew boards with multiple attachment points to allow flexibility of sheeting. Racing or high performance sails can be fitted with battens (furling sails parallel to the luff to enable rolling) to keep the leech exit flat to minimise drag. Sails can be designed to suit roller reefing systems or Wycombe Martin style furlers on traditional boats or brass piston hanks. Whatever your requirements you can trust Dart Sails to get it right.