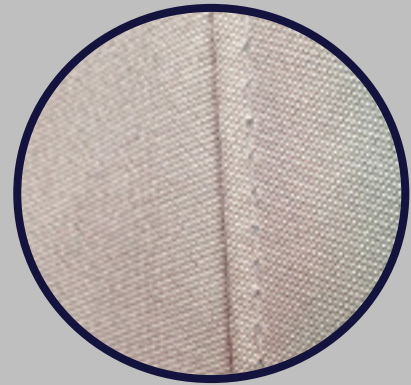


Dart Sails & Covers

Winch and Engine Covers

We use anti-wick thread which swells up when wet to make the cover water proof or an option to upgrade of thread to 'Tenara', guaranteed for 15 years, almost impervious to UV degradation so perfect for use in high UV areas, acid rain and other pollutants, however 'Tenara' is not an anti-wick thread so it can leak in big downpours.



The bottom of the cover is fitted with an elasticated base and grommets for a lashing if required, or studs to the deck of the boat.



WINCH COVERS

Our Winch Covers are manufactured from a PU coated heavy Acrylic canvas to ensure a waterproof long lasting cover with excellent UV resistance. The acrylic canvas is available in a large range of colours. The bottom of the cover is fitted with an elasticated base to keep it located. To ensure the cover fits correctly we will need the height and diameter of the winch.

ENGINE COVERS

Our Engine Covers are manufactured from a PU coated heavy Acrylic canvas to ensure a waterproof long lasting cover with excellent UV resistance. The acrylic canvas is available in a large range of colours. The bottom of the cover is fitted with an elasticated base (and grommets for a lashing if required) to keep it located on the engine. To ensure the cover fits correctly we will make a polythene pattern of the cover to ensure that the finished cover fits correctly. We will then take the pattern back to our loft where we will manufacture your new cover.