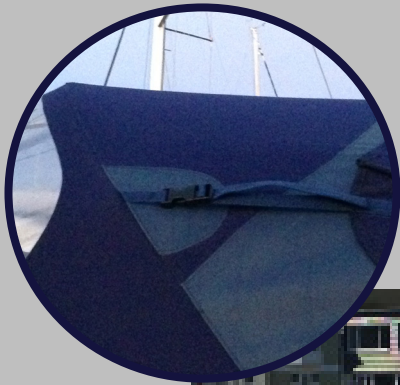


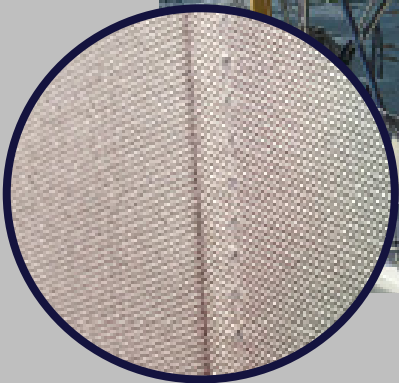
Dart Sails & Covers

Bimini



Additional zip on sides – allows for extra protection

On larger boats it may be possible to add the Bimini onto the back of the sprayhood for maximum shade and protection while sailing.



We use anti-wick thread which swells up when wet to make the cover water proof or an option to upgrade of thread to 'Tenara', guaranteed for 15 years, almost impervious to UV degradation so perfect for use in high UV areas, acid rain and other pollutants, however 'Tenara' is not an anti-wick thread so it can leak in big downpours.



Heavy Duty cast stainless steel clamps and end plugs for large hoods or for charter boats where the cover can be roughly handled.



Window in the roof to enable the mainsail to be viewed by the helm when sailing.

The Bimini is a free standing sun shade to offer protection from the sun in warm climates without interfering with the sails and winches allowing for shade while sailing. The cover can be fitted to either a collapsible frame or a frame that can fold back against the backstays and stored in a 'Banana Bag' when not required. The frame would normally be made from 1" stainless steel tube for rigidity. Collapsible frames come with a handy storage bag for the frames. Our Biminis are manufactured from a PU coated heavy Acrylic canvas to ensure a waterproof long lasting cover with excellent UV resistance. The

acrylic canvas is available in a large range of colours to match the yachts other canvas. Each Bimini needs to be patterned individually as every boat is different. First we will visit the boat and measure up for a new frame, if you do not already have one. After returning to fit a new frame if required we will make a polythene pattern of Bimini to ensure that the finished cover fits correctly. We will then take the pattern back to our loft where we will manufacture your new Bimini. We will finally return to the boat where we will fit the Bimini and fit the hardware to guarantee that the Bimini is tailored to suit your boat.