

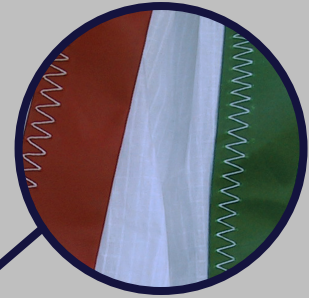
Dart Sails & Covers

Symmetrical Spinnaker

Option of corporate or personal image painted onto sail



Coloured leech and luff tapes



**GBR
1234**

Option of generous side launch or hooped bag



SEALnGLIDE
+ GLAZE

Option of 'Seal'n'Glide' coating to eliminate water penetration & allow easier hoisting & lowering with a snuffer

Option of snuffer for easy handling



Our spinnakers are constructed with a full radial construction. Not only do the panels radiate out of the 3 corners like on a standard tri-radial sail, the centre sections have vertical panels that are 'rocked' to continue the continuous smooth trajectory curve from head to clew/tack. This panel layout allows the thread lines or the fabric to be aligned with the loads imposed on the sail, thus reducing stretch and improves performance and durability. With improved computer designing, nesting and cutting there is little difference in cloth and assembly efficiency allowing full radial sails at tri-radial prices!

Heavier fabric can be used in higher load areas like head and tack for improved durability and efficiency for larger sails. Our spinnakers are designed to suit the customers' requirements, usually to be easy to trim and stable however more specific requirements can be accommodated. All spinnakers are custom designed and cut, a personalised colour combination is available. Fabric weight and exact shape depends on size of boat. We offer personalised images to be painted onto the sail. Price depends on size and complexity. Spinnakers can be easily handled even short handed with the use of a Snuffer.