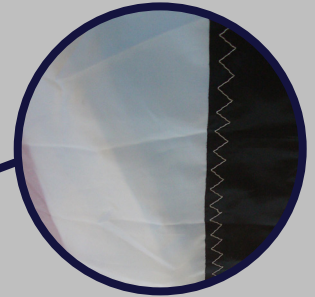


Dart Sails & Covers

Spinnaker Snuffer



Ring at top of system to allow easy attachment of the halyard



Ultra soft polyester - to enable easy concertining, and white to ensure no dye runs onto sail



Large contrasting vertical line top to bottom to allow the user to make sure the snuffer is not twisted



Ultra soft sleeve for the internal line to pass through ensuring there is no chance that the ropes can wrap around the sail



Lightweight Polypropylene continuous uphaul/downhaul rope



Fibreglass moulded base to smoothly gather the sail when snuffing



The Snuffer is an essential addition to downwind sail on a short handed Cruising or Offshore Racing yacht. The snuffer allows the spinnaker or cruising chute to be hoisted whilst contained in a polyester tube. When the tack and sheets are attached and the sail is hoisted - bear away onto a broad reach with the snuffed sail in the lee

of the mainsail simply pull on the continuous uphaul/downhaul and hey presto the sail opens up ready to draw. To douse the sail or control the sail reverse the process, by bearing away to a broad reach dump the sheet so the sail is flapping with no load and pull down on the line until the base of the snuffer reaches the foot of the sail.