

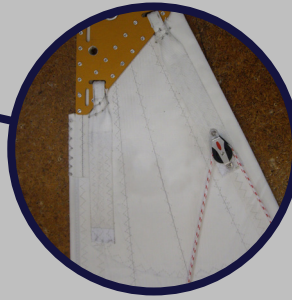
Dart Sails & Covers

Racing Mainsail

Option of cross-cut with some fabric options



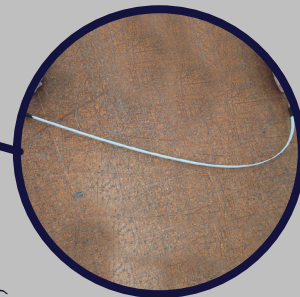
Leech line cleats at clew and reefs and option of overhead leech line allowing leech line to be adjusted at gooseneck



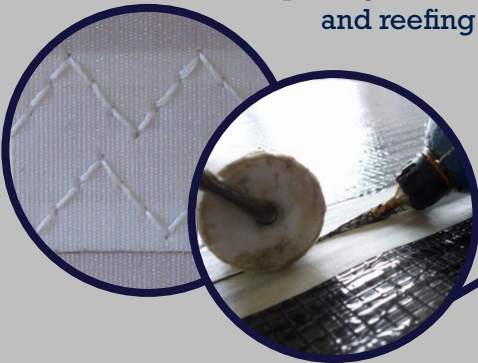
Option of top full length batten



Tapered non-shattering & anti-twist epoxy or fibreglass battens



Luff reef 'spectacle' stainless steel rings and webbing luff handle to aid pulling sail down and reefing



Anti-chafe 3-step stitched seams or ultra bond glued



Option of sail numbers, class insignia, tell tales, draft stripes

Laminate Sails with a radial panel construction offer superior shape retention compared to any woven product. The panels are aligned radiating from the corners in the anticipated load angles, with careful fabric selection, distortion can be minimised. Laminates are available for Cruising boats with highly durable double-sided woven taffetas; Racing sails are available in a film/film option for minimum weight and highest performance. Single taffeta fabric is available for compromise sails where durability is required as well as racing performance. Radial sails allow lighter fabric to be used in the low load areas like the luff and heavier fabrics to be used at the high load areas like the clew and head. We may use up to

4 different fabric weights in one sail, ensuring the lightest and best performance for a given style of fabric. Cross cut laminates do not offer the long term shape retention that a radial panelled sail delivers, whilst the new style of 'membrane' sails offer excellent performance but their long term shape durability is poor. Cruising and Club Racing sails seams are traditionally sewn while 'Grand Prix' Carbon materials are 'Ultra Bond Glued' for zero seam creep. Mainsails include tapered battens, sail numbers, class insignia, tell tales, draft stripes, sail bag and optional number of reefs. The foot attachment can be via a bolt rope or loose or a shelf foot with bolt rope.