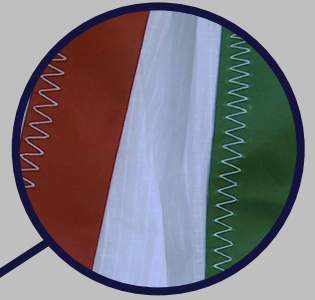


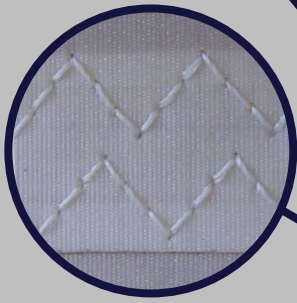
Dart Sails & Covers

Racing Asymmetrical Spinnaker

Option of corporate or personal image painted onto sail



Coloured leech and luff tapes



Anti-chafe 3-step stitched seams



Option of 'Seal'n'Glide' coating to eliminate water penetration & allow easier hoisting and lowering, and allow faster and smoother gybes as well as easier hoisting and dropping of the sail

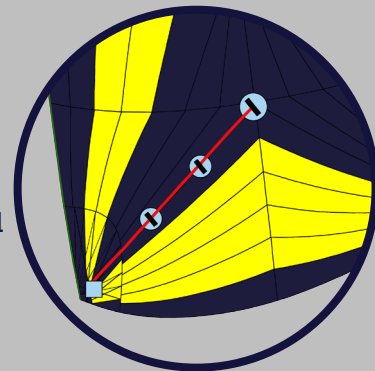


Option of spinnaker furler system for easy handling



Option of generous side launch bag

Option of retrieval line, with patches and velcro loops to enable easier recovery of sail.



Our Asymmetric spinnakers are constructed with a full radial construction where the panels radiate out of the 3 corners like on a standard tri-radial sail, and the centre sections have vertical panels that are 'rocked' creating a continuous smooth trajectory curve from head to clew / tack. This panel layout allows the thread lines or fabric to be aligned with the loads imposed on the sail, thus reducing stretch and improving performance and durability. With improved computer design there is little difference in cloth and assembly efficiency allowing full radial sails at tri-radial prices! Heavier fabric can

be used in higher load areas like head and tack for improved durability and efficiency for larger sails. Our Asymmetric Spinnakers are designed to suit the customers' requirements, usually to be easy to trim and stable yet close winded however more specific requirements can be accommodated. All spinnakers are custom designed and cut, a personalized colour combination is available. Fabric weight and exact shape depends on size of boat. We offer personalized images to be painted onto the sail. Price depends on size and complexity.